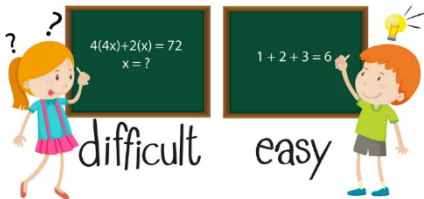


We all find some things easy and some things more difficult...

For some children, parts of the school day can be difficult; learning to read, understanding new information or communicating with others. This means that we need to adapt what we do to help everyone to learn.

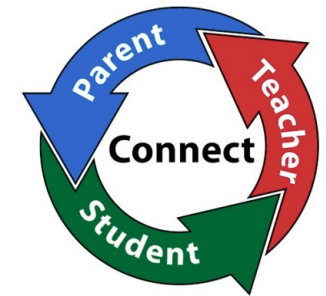
This could be extra support in class from an adult like a TA, special equipment, different ways of working or different activities.

When this happens, and there is a barrier to learning, we call it having a Special Educational Need or Disability – SEND for short.



Having a SEND does **NOT** mean that a person does not try hard or is not clever. We know that children with SEND have lots of super strengths and skills.

It is important that we work together with children and their families to find the right type of support. We need you to tell us what helps you and what makes learning more difficult for you.



We want everyone to be happy and successful learners!